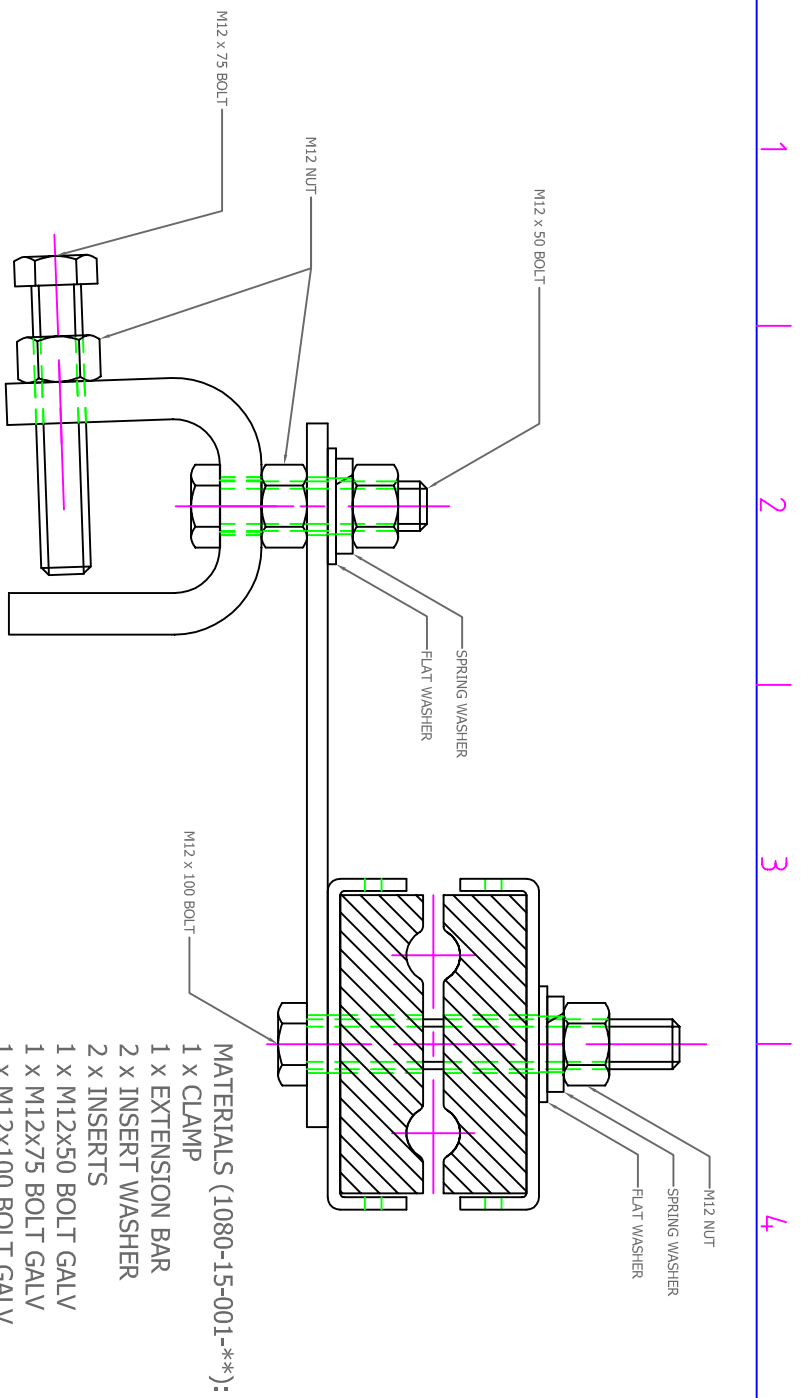


- MATERIALS (1080-15-004-**):
- 2 x INSERT WASHER
 - 2 x INSERTS
 - 1 x M12x100 COACH BOLT GALV
 - 1 x M12 FLAT WASHER GALV

OFS-1080-15-004-**

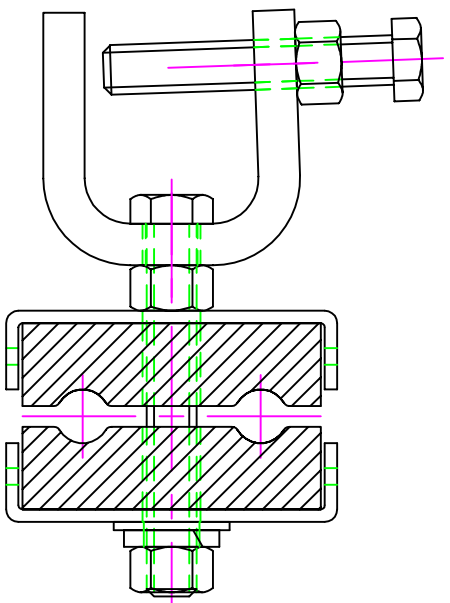
DOWNLEAD CUSHION WOOD POLE MOUNT



OFS-1080-15-001-**

- MATERIALS (1080-15-001-**):
- 1 x CLAMP
 - 1 x EXTENSION BAR
 - 2 x INSERT WASHER
 - 2 x INSERTS
 - 1 x M12x50 BOLT GALV
 - 1 x M12x75 BOLT GALV
 - 1 x M12x100 BOLT GALV
 - 4 x M12 NUT GALV
 - 2 x M12 FLAT WASHER GALV
 - 2 x M12 SPRING WASHER GALV

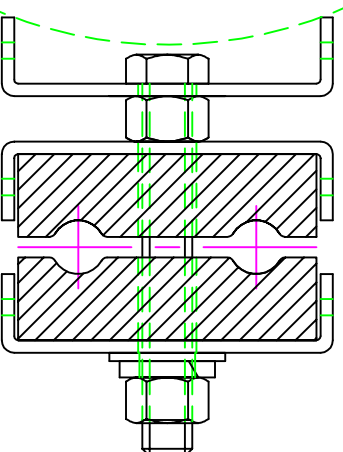
DOWNLEAD CUSHION WITH CLAMP, BRACKET AND EXTENSION BAR



OFS-1080-15-002-**

- MATERIALS (1080-15-002-**):
- 1 x CLAMP
 - 2 x INSERT WASHER
 - 2 x INSERTS
 - 1 x M12x75 BOLT GALV
 - 1 x M12x100 BOLT GALV
 - 3 x M12 NUT GALV
 - 1 x M12 FLAT WASHER GALV
 - 1 x M12 SPRING WASHER GALV

DOWNLEAD CUSHION WITH CLAMP BRACKET



OFS-1080-15-003-**

- MATERIALS (1080-15-003-**):
- 3 x INSERT WASHER
 - 2 x INSERTS
 - 1 x M12x100 BOLT GALV
 - 2 x M12 NUT GALV
 - 1 x M12 FLAT WASHER GALV
 - 1 x M12 SPRING WASHER GALV

DOWNLEAD CUSHION WITH CONCRETE/STEEL POLE MOUNT FOR STRAP

Itemref	Quantity	Title/Name, designation, material, dimension etc	Article No./Reference
Designed by DBR	Checked by TAR	Approved by - date DBR - 16/08/2002	Date 16/08/2002
File name XXX		Scale NTS	

Optical Fibre Systems

Download Cushion Assy.

OFS-DWG-1080-15

Edition 0
Sheet 1/1